

Ongoing Activities

01/28/19 – 02/01/19

- Erecting sequence 4 & 5 steel
- Poured 3rd level west elevated slab
- Framing and sheathing exterior walls on main, 2nd and 3rd level west
- Installing exterior brick on south and west elevations of lower level
- Installing main and 2nd level west overhead MEP
- Installing lower level roof
- Topping out celebration

Upcoming Activities

- Main and lower level polished area concrete pour
- Continue erecting sequence 4 & 5 steel
- Complete lower level block walls
- Continue installing lower level roofing
- Continue framing/sheathing all elevations on west
- Frame interior priority walls

Financial & Schedule Status

Current GMP = \$27.6M
Bill to Date = \$10,797,089

Start Date: July 2, 2018
Current Completion Date:
July 10, 2019

Project Overview



Photo of the project site from sidewalk on Westhaven looking south

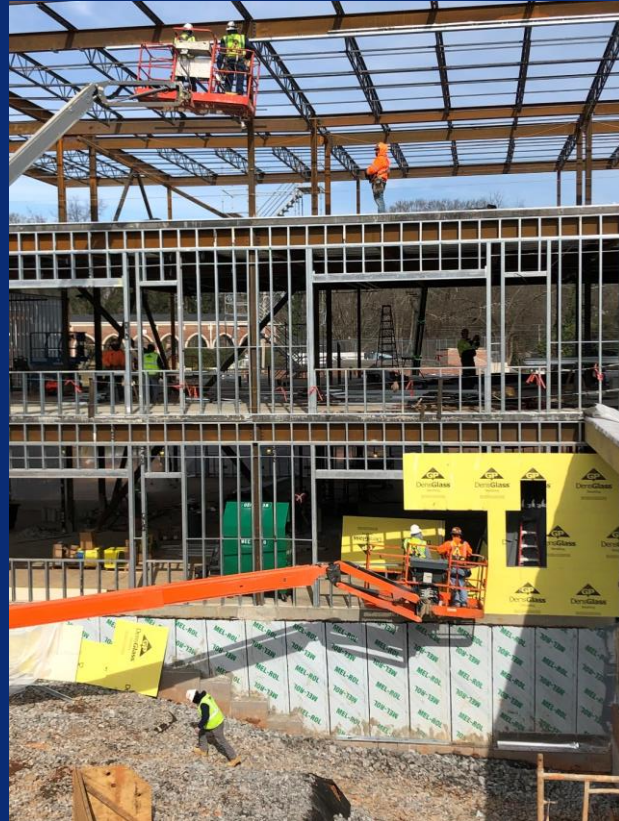
Safety Sector



“Ladder Safety”

Ladders installed for personal access points in vertical breaks must extend a minimum of 36” above the landing surface, and must be secured in a manner to prevent the ladder’s movement.

Secured to
prevent
movement



- Sheathing main level exterior
- Framing 2nd level exterior
- Installing track for 3rd level exterior



Main, 2nd and 3rd level west receiving fluid applied air barrier



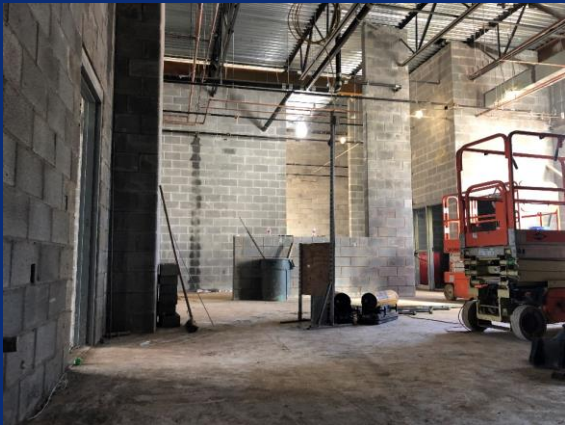
Topping Out Celebration



South side of lower level exterior brick topped out



Parapet roofing install ongoing



Kitchen area interior CMU walls topped out



3rd level west pour complete



Polished floor mock-up and sample colors in progress

